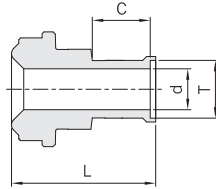


Clean Fittings

Mini Short Tube Weld Gland with Shoulder

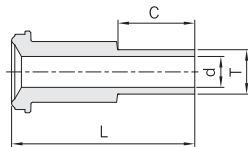
H-ZMSG-A



Part No.	ZCR Size	T Tube O.D.	Nominal Wall Thickness	d		L		C		Working Pressure psig (bar)		
				mm	in.	mm	in.	mm	in.	NI	SS	CU
H-ZMSG- 4A	1/4	1/4	0.035 in.	4.55	0.18	15.7	0.62	6.35	0.25	5100 (351)		
H-ZMSG- 6A	3/8	3/8		7.67	0.30	16.6	0.65			3300 (227)	2600 (179)	
H-ZMSG- 8A	1/2	1/2	0.049 in.	10.14	0.40	16.8	0.66			3500 (241)	2800 (192)	
H-ZMSG- 6MA	1/4	6mm	1.0 mm	4.06	0.16	15.7	0.62			6800 (468)	5400 (372)	
H-ZMSG- 8MA		8mm		6.12	0.24	16.6	0.65			4900 (337)		
H-ZMSG-10MA	1/2	10mm		8.12	0.32					3500 (241)	2800 (192)	
H-ZMSG-12MA		12mm		9.96	0.39	16.8	0.66			3100 (213)	2400 (165)	

Male Weld Gland

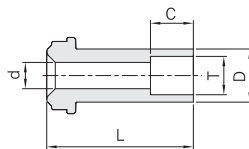
H-ZGM



Part No.	ZCR Size	T Tube O.D.	d		L		C		Working Pressure psig (bar)		
			mm	in.	mm	in.	mm	in.	NI	SS	CU
H-ZGM - 2	1/8	1/8	1.50	0.06	17.8	0.70	7.1	0.28	9000 (620)	11200 (771)	7200 (496)
H-ZGM4- 2	1/4				33.3	1.31			8000 (551)	10000 (689)	6400 (440)
H-ZGM - 4	1/4	1/4	3.00	0.12			10.4	0.41	3500 (241)	4300 (296)	2800 (192)
H-ZGM8- 4											
H-ZGM - 6	1/2	3/8	7.10	0.28	38.1	1.50	12.7	0.50		3500 (241)	
H-ZGM - 8	1/2	1/2	10.14	0.40							
H-ZGM -12	3/4	3/4	13.50	0.53	50.8	2.00	15.7	0.62	3000 (206)	3700 (254)	2400 (165)
H-ZGM -16	1	1	19.10	0.75	56.4	2.22	20.6	0.81	2400 (165)	3000 (206)	1900 (130)

Socket Weld Gland

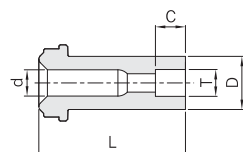
H-ZGS



Part No.	ZCR Size	T Tube Socket	d		D		L		C		Working Pressure psig (bar)		
			mm	in.	mm	in.	mm	in.	mm	in.	NI	SS	CU
H-ZGS- 2S	1/8	1/8	2.30	0.09	5.1	0.20	17.8	0.70	2.5	0.10	7100 (489)		
H-ZGS- 4S	1/4	1/4	4.55	0.18	8.9	0.35	33.3	1.31	7.1	0.28	5500 (378)		
H-ZGS- 6S	1/2	3/8	7.67	0.30	15.2	0.60	38.1	1.50	7.9	0.31	3500 (241)	4300 (291)	2800 (192)
H-ZGS- 8S		1/2	10.14	0.40					9.7	0.38	3000 (206)	2400 (165)	
H-ZGS-12S	3/4	3/4	13.50	0.53	22.4	0.88	50.8	2.00	11.2	0.44	2800 (192)	2200 (151)	
H-ZGS-16S	1	1	19.10	0.75	30.2	1.19	56.4	2.22	15.7	0.62	2400 (165)	3000 (306)	1900 (130)

Reducing Socket Weld Gland

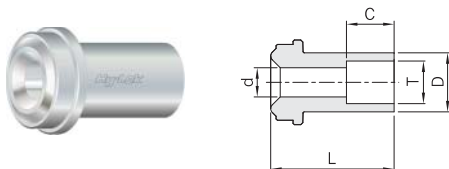
H-ZGS



Part No.	ZCR Size	T Tube Socket	d		D		L		C		Working Pressure psig (bar)		
			mm	in.	mm	in.	mm	in.	mm	in.	NI	SS	CU
H-ZGS4-2S	1/4	1/8	2.30	0.09	8.9	0.35	33.3	1.31	2.5	0.10	8000 (551)		
H-ZGS8-4S	1/2	1/4	4.55	0.18	15.2	0.60	38.1	1.50	7.1	0.28	3500 (241)		

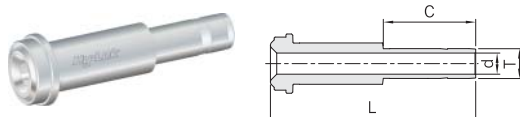
Dimensions are reference only, subject to change.

Short Socket Weld Gland H-ZGS



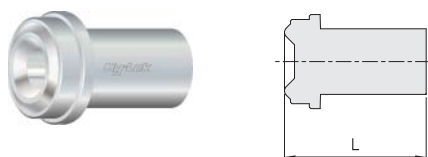
Part No.	ZCR Size	T Tube Socket	d		D		L		C		Working Pressure psig (bar)		
			mm	in.	mm	in.	mm	in.	mm	in.	NI	SS	CU
H-ZGS-4SL12.7	1/4	1/4	4.55	0.18	8.9	0.35	12.7	0.50	7.1	0.28	5500 (378)		
H-ZGS-4SL19.1							19.1	0.75					

Tube Adapter Gland H-ZGT



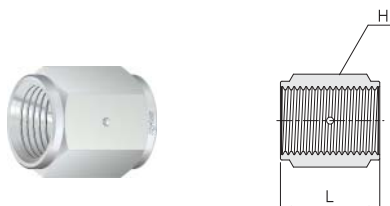
Part No.	ZCR Size	T Tube Socket	d		L		C		Working Pressure psig (bar)		
			mm	in.	mm	in.	mm	in.	NI	SS	CU
H-ZGT-4	1/4	1/4	4.30	0.17	41.0	1.62	16.2	0.64	8000 (511)	10000 (689)	6400 (440)
H-ZGT-6	1/2	3/8	6.80	0.27	46.0	1.81	17.8	0.70	3500 (241)	4300 (296)	2800 (192)
H-ZGT-8		1/2	9.40	0.37	49.3	1.94	24.4	0.96			

Blind Gland H-ZBG



Part No.	ZCR Size	L	
		mm	in.
H-ZBG- 2	1/8	17.8	0.70
H-ZBG- 4	1/4	33.3	1.31
H-ZBG- 8	1/2	38.1	1.50
H-ZBG-12	3/4	50.8	2.00
H-ZBG-16	1	56.4	2.22

Coupling H-ZC



Part No.	ZCR Size	L		H
		mm	in.	in.
H-ZC- 2	1/8	16.8	0.66	7/16
H-ZC- 4	1/4	30.2	1.19	3/4
H-ZC- 8	1/2	33.3	1.31	1 1/16
H-ZC-12	3/4	42.7	1.68	1 1/2
H-ZC-16	1	51.8	2.04	1 3/4

Dimensions are reference only, subject to change.