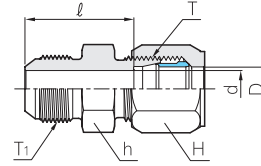


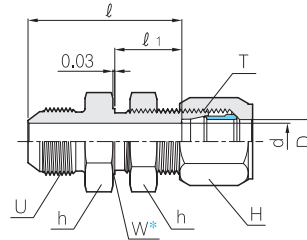
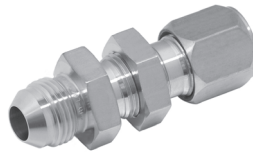
# SAE J514 Flareless Tube Fittings

## Hose Male Union BHUM



Part No.	Tube O.D D (in)	T Straight Thread Size	T <sub>1</sub> Straight Thread Size	d	Width across flat		l
					h	H	
BHUM 4T - 04U	1/4	7/16 - 20	7/16 - 20	4.4	12.7	14.2	24.1
BHUM 6T - 06U	3/8	9/16 - 18	9/16 - 18	7.5	15.8	17.4	25.9
BHUM 8T - 08U	1/2	3/4 - 16	3/4 - 16	9.9	20.6	22.2	29.4
BHUM 10T - 10U	5/8	7/8 - 14	7/8 - 14	12.3	23.8	25.4	33.8
BHUM 12T - 12U	3/4	1 1/16 - 12	1 1/16 - 12	15.5	28.5	31.7	40.1
BHUM 16T - 16U	1	1 5/16 - 12	1 5/16 - 12	21.4	41.2	38.1	39.4
BHUM 20T - 20U	1 1/4	1 5/8 - 12	1 5/8 - 12	27.6	44.4	50.0	40.1
BHUM 24T - 24U	1 1/2	1 7/8 - 12	1 7/8 - 12	33.3	54.0	75.0	42.4

## Hose Bulkhead Male Union BHBM



W\* - Bulkhead Pilot Dia.  
Recommended Clearance  
Hole +0.015 Over W Dia

Part No.	Tube O.D D (in)	T Straight Thread Size	T <sub>1</sub> Straight Thread Size	d	Width across flat		l	l <sub>1</sub>	W	Max. Bulkhead Thickness
					h	H				
BHBM 4T - 04U	1/4	7/16 - 20	7/16 - 20	4.4	17.4	14.2	43.2	22.6	11.2	9.7
BHBM 6T - 06U	3/8	9/16 - 18	9/16 - 18	7.5	20.6	17.4	46.2	23.1	14.2	10.2
BHBM 8T - 08U	1/2	3/4 - 16	3/4 - 16	9.9	25.4	22.2	50.8	25.4	19.1	10.2
BHBM 10T - 10U	5/8	7/8 - 14	7/8 - 14	12.3	28.5	25.4	55.9	27.7	22.4	9.4
BHBM 12T - 12U	3/4	1 1/16 - 12	1 1/16 - 12	15.5	34.9	31.7	65.6	30.5	26.9	10.9
BHBM 16T - 16U	1	1 5/16 - 12	1 5/16 - 12	21.4	41.2	38.1	64.2	28.9	33.3	10.9

All dimensions are in millimeters unless otherwise specified. Dimensions are for reference only, subject to change.