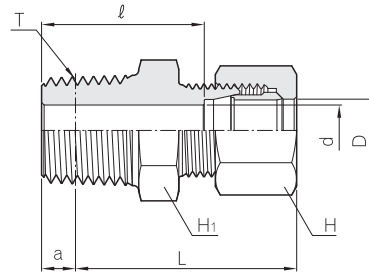
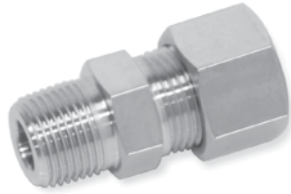


## Tube Fittings

### Male Connector

## BMC - R



Part No.	Tube O.D.		(PT) T	d	Basic gauge length a	Width across flat		l	Approx. L
	D					H <sub>1</sub>	H		
BMC 04 - 01R	4		1/8	2.5	3.97	12	12	16.0	25.5
BMC 06 - 01R	6		1/8	4.0	3.97	14	14	21.0	34.5
BMC 06 - 02R	6		1/4	4.0	6.01	17	14	26.0	37.5
BMC 08 - 01R	8		1/8	4.0	3.97	17	17	22.0	35.5
BMC 08 - 02R	8		1/4	6.0	6.01	17	17	26.0	37.5
BMC 10 - 02R	10		1/4	7.0	6.01	17	19	26.0	38.5
BMC 10 - 03R	10		3/8	8.0	6.35	19	19	27.0	39.0
BMC 10 - 04R	10		1/2	8.0	8.16	22	19	32.0	42.5
BMC 12 - 02R	12		1/4	7.0	6.01	19	22	26.0	38.5
BMC 12 - 03R	12		3/8	9.0	6.35	19	22	27.0	39.0
BMC 12 - 04R	12		1/2	10.0	8.16	24	22	32.0	42.5
BMC 15 - 03R	15		3/8	9.0	6.35	24	27	29.5	43.0
BMC 15 - 04R	15		1/2	12.0	8.16	24	27	33.5	45.5
BMC 16 - 03R	16		3/8	9.0	6.35	27	30	29.5	43.0
BMC 16 - 04R	16		1/2	12.0	8.16	27	30	33.5	45.5
BMC 18 - 03R	18		3/8	9.0	6.35	27	32	29.0	43.0
BMC 18 - 04R	18		1/2	12.0	8.16	27	32	33.0	45.5
BMC 20 - 04R	20		1/2	12.0	8.16	30	36	35.0	47.5
BMC 20 - 06R	20		3/4	16.0	9.53	30	36	37.0	48.0
BMC 22 - 04R	22		1/2	12.0	8.16	32	36	34.0	47.5
BMC 22 - 06R	22		3/4	16.0	9.53	32	36	36.0	48.0
BMC 25 - 06R	25		3/4	16.0	9.53	36	41	36.0	50.0
BMC 25 - 08R	25		1	20.0	10.39	36	41	39.0	52.0
BMC 28 - 06R	28		3/4	16.0	9.53	41	46	38.0	52.5
BMC 28 - 08R	28		1	22.0	10.39	41	46	41.0	54.5
BMC 30 - 08R	30		1	22.0	10.39	41	46	41.0	55.0
BMC 30 - 10R	30		1 1/4	25.0	12.70	46	46	45.0	57.0
BMC 32 - 10R	32		1 1/4	26.0	12.70	46	50	44.0	57.0
BMC 35 - 10R	35		1 1/4	28.0	12.70	46	55	44.0	60.0
BMC 38 - 12R	38		1 1/2	32.0	12.70	50	60	45.0	64.0
BMC 40 - 12R	40		1 1/2	32.0	12.70	55	60	50.0	69.0
BMC 42 - 12R	42		1 1/2	34.0	12.70	55	60	50.0	69.0
BMC 50 - 16R	50		2	40.0	15.88	65	75	59.0	76.5
BMC 81 - 01R	1/8	10.5	1/8	4.0	3.97	17	19	22.0	36.5
BMC 81 - 02R	1/8	10.5	1/4	7.0	6.01	17	19	26.0	38.5
BMC 82 - 02R	1/4	13.8	1/4	7.0	6.01	22	24	28.5	42.0
BMC 82 - 03R	1/4	13.8	3/8	9.0	6.35	22	24	29.5	42.5
BMC 83 - 03R	3/8	17.3	3/8	9.0	6.35	27	32	29.0	43.0
BMC 83 - 04R	3/8	17.3	1/2	12.0	8.16	27	32	33.0	45.5
BMC 84 - 04R	1/2	21.7	1/2	12.0	8.16	32	36	34.0	47.5
BMC 84 - 06R	1/2	21.7	3/4	16.0	9.53	32	36	36.0	48.0
BMC 85 - 06R	3/4	27.2	3/4	16.0	9.53	41	46	38.0	52.5
BMC 85 - 08R	3/4	27.2	1	22.0	10.39	41	46	41.0	54.5
BMC 86 - 08R	1	34.0	1	22.0	10.39	46	55	41.0	59.0
BMC 86 - 10R	1	34.0	1 1/4	28.0	12.70	46	55	44.0	60.0
BMC 87 - 10R	1 1/4	42.7	1 1/4	31.0	12.70	60	65	52.0	72.0
BMC 87 - 12R	1 1/4	42.7	1 1/2	34.0	12.70	60	65	52.0	72.0
BMC 88 - 12R	1 1/2	48.6	1 1/2	36.0	12.70	65	75	55.0	76.0
BMC 88 - 16R	1 1/2	48.6	2	40.0	15.88	65	75	59.0	76.5

All dimensions are in millimeters. Dimensions are for reference only, subject to change.