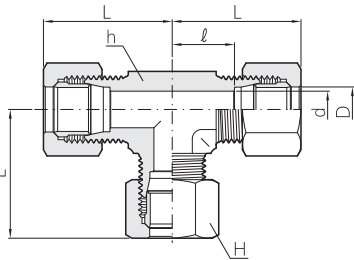
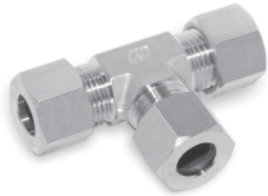


## Tube Fittings

### Union Tee

#### BT

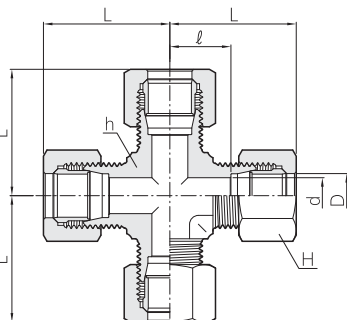
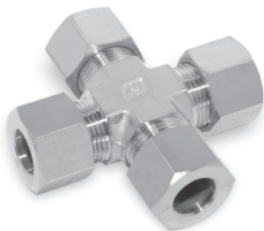


Part No.	Tube O.D.		d	Width across flat		ℓ	Approx. L
	D			h	H		
BT - 04	4		2.5	12	12	13.0	22.5
BT - 06	6		4.0	14(12) *	14	12.0	30.5
BT - 08	8		6.0	17(12) *	17	14.0	33.5
BT - 10	10		8.0	17(14) *	19	15.0	34.5
BT - 12	12		10.0	19(17) *	22	17.0	35.5
BT - 15	15		12.0	24(19) *	27	21.0	41.5
BT - 16	16		13.0	27	30	24.5	44.5
BT - 18	18		14.0	27(24) *	32	23.5	44.5
BT - 20	20		17.0	30	36	25.0	45.5
BT - 22	22		18.0	32	36	25.0	46.5
BT - 25	25		20.0	36	41	26.0	49.5
BT - 28	28		22.0	41	46	31.0	55.0
BT - 30	30		25.0	41	46	31.0	55.5
BT - 32	32		26.0	46	50	34.0	59.5
BT - 35	35		28.0	46	55	35.0	63.5
BT - 38	38		32.0	50	60	38.0	69.5
BT - 40	40		32.0	55	60	43.0	74.5
BT - 42	42		34.0	55	60	43.0	74.5
BT - 50	50		40.0	65	75	50.0	83.5
BT - 81	1/8	10.5	8.0	17	19	16.0	34.5
BT - 82	1/4	13.8	11.0	22	24	20.5	40.0
BT - 83	3/8	17.3	14.0	27	32	24.0	44.5
BT - 84	1/2	21.7	18.0	32	36	25.0	46.5
BT - 85	3/4	27.2	22.0	41	46	31.0	55.0
BT - 86	1	34.0	28.0	46	55	35.0	63.5
BT - 87	1 1/4	42.7	34.0	60	65	45.0	77.5
BT - 88	1 1/2	48.6	40.0	65	75	50.0	83.5

\* Note : Later on, Some sizes will be supplied as changed sizes in parenthesis.

### Union Cross

#### BC



Part No.	Tube O.D.		d	Width across flat		ℓ	Approx. L
	D			h	H		
BC - 06	6		4	17(12) *	14	12.5	33.5
BC - 08	8		6	17(12) *	17	14.5	33.5
BC - 10	10		8	19(14) *	19	15.5	35.5
BC - 12	12		10	19(17) *	22	17.5	35.5
BC - 15	15		12	27(19) *	27	21.5	44.5
BC - 16	16		13	27	30	24.5	44.5
BC - 18	18		14	30(24) *	32	23.5	45.5
BC - 20	20		17	30	36	25.5	45.5
BC - 25	25		20	36	41	26.5	49.5
BC - 30	30		25	46	46	35.5	59.5
BC - 32	32		26	46	50	34.5	59.5

\* Note : Later on, Some sizes will be supplied as changed sizes in parenthesis.

All dimensions are in millimeters. Dimensions are for reference only, subject to change.