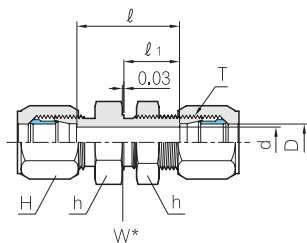
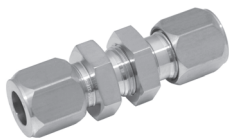


Bulkhead Union

BBU

SAE 080601 MS51812



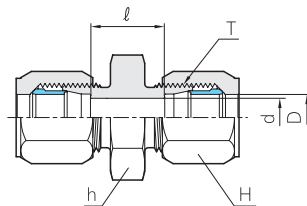
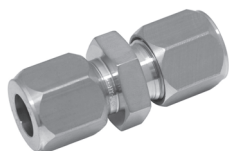
W* - BULKHEAD PILOT DIA.
RECOMMENDED CLEARANCE
HOLE +0.015 OVER W DIA

Part No.	Tube O.D D (in)	T Straight Thread Size	d	Width across flat		ℓ	ℓ ₁	W	Max. Bulkhead Thickness
				h	H				
BBU - 4T	1/4	7/16 - 20	5.2	17.4	14.2	36.1	22.5	11.2	9.7
BBU - 6T	3/8	9/16 - 18	7.0	20.6	17.4	37.6	23.4	14.2	10.2
BBU - 8T	1/2	3/4 - 16	10.7	25.4	22.2	40.9	25.6	19.1	10.2
BBU - 10T	5/8	7/8 - 14	12.7	28.5	25.4	45.2	27.9	22.4	9.4
BBU - 12T	3/4	1 1/16 - 12	16.6	34.9	31.7	51.3	30.7	26.9	10.9
BBU - 16T	1	1 5/16 - 12	22.2	41.2	38.1	48.0	29.1	33.3	10.9

Large Hex Union

BUH

SAE 080119 MS51856



Part No.	Tube O.D D (in)	T Straight Thread Size	d	Width across flat		ℓ
				h	H	
BUH - 4T	1/4	7/16 - 20	5.2	17.4	14.2	18.1
BUH - 6T	3/8	9/16 - 18	7.0	20.6	17.4	18.8
BUH - 8T	1/2	3/4 - 16	10.7	25.4	22.2	20.6
BUH - 10T	5/8	7/8 - 14	12.7	28.5	25.4	23.1
BUH - 12T	3/4	1 1/16 - 12	16.6	34.9	31.7	28.2
BUH - 16T	1	1 5/16 - 12	22.2	41.2	34.9	24.9

All dimensions are in millimeters unless otherwise specified. Dimensions are for reference only, subject to change.