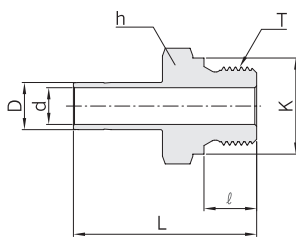


Male Adapter CAM-G



Connectors Fractional Hy-Lok Port To Female ISO Parallel Thread

Part No.	Tube O.D. D		T G(PF)	d min.	Width across flat h		ℓ	L	K
	in	mm			in	mm			
CAM 2 - 2G	1/8	3,17	1/8	2,03	9/16	14,28	7,11	30,99	13,72
CAM 2 - 4G	1/8	3,17	1/4	2,03	3/4	19,05	11,17	35,81	17,78
CAM 4 - 2G	1/4	6,35	1/8	4,06	9/16	14,28	7,11	33,27	13,72
CAM 4 - 4G	1/4	6,35	1/4	4,32	3/4	19,05	11,17	38,10	17,78
CAM 6 - 4G	3/8	9,52	1/4	5,84	3/4	19,05	11,17	39,88	17,78
CAM 6 - 6G	3/8	9,52	3/8	6,86	7/8	22,22	11,17	40,64	21,59
CAM 8 - 4G	1/2	12,70	1/4	5,84	3/4	19,05	11,17	45,47	17,78
CAM 8 - 6G	1/2	12,70	3/8	7,88	7/8	22,22	11,17	46,23	21,59
CAM 8 - 8G	1/2	12,70	1/2	9,40	1 1/16	26,98	14,22	49,28	25,91
CAM 12 - 12G	3/4	19,05	3/4	14,73	1 5/16	33,33	15,75	54,88	31,75
CAM 16 - 16G	1	25,40	1	19,80	1 5/8	41,27	18,29	64,52	38,86

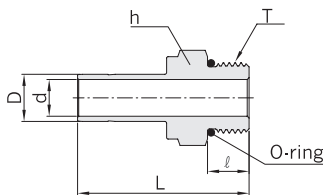
Plugs unused port of metric Hy-Lok fittings.

Connectors Metric Hy-Lok Port To Female ISO Parallel Thread

Part No.	Tube O.D. D	T G(PF)	d min.	Width across flat h	ℓ	L	K
CAM 6M - 2G	6	1/8	4,0	14	7,1	34,3	13,7
CAM 6M - 4G	6	1/4	4,1	19	11,2	39,1	17,9
CAM 8M - 4G	8	1/4	5,6	19	11,2	40,1	17,9
CAM 10M - 4G	10	1/4	5,9	19	11,2	40,9	17,9
CAM 10M - 6G	10	3/8	7,1	22	11,2	41,7	21,7
CAM 10M - 8G	10	1/2	7,1	27	14,2	44,7	25,9
CAM 12M - 4G	12	1/4	5,9	19	11,2	46,7	17,9
CAM 12M - 6G	12	3/8	7,9	22	11,2	47,2	21,7
CAM 12M - 8G	12	1/2	8,8	27	14,2	50,5	25,9
CAM 18M - 8G	18	1/2	11,9	27	14,2	52,1	25,9
CAM 18M - 12G	18	3/4	13,9	35	15,7	56,1	31,9
CAM 28M - 16G	28	1	19,8	41	18,3	72,9	39,0
CAM 28M - 20G	28	1 1/4	22,5	50	19,8	77,0	49,0
CAM 30M - 20G	30	1 1/4	24,3	50	19,8	80,8	49,0
CAM 32M - 20G	32	1 1/4	26,5	50	19,8	81,8	49,0
CAM 38M - 24G	38	1 1/2	31,6	55	22,1	94,5	54,7

Plugs unused port of metric Hy-Lok fittings.

SAE / MS Male Adapter CAM-U



Connectors Fractional Hy-Lok Port To SAE / MS Straight Thread Boss

Part No.	Tube O.D. D		Straight Thread T(U)	d min.	Width across flat h		ℓ	L	O-ring Uniform Size Number
	in	mm			in	mm			
CAM 2 - 2U	1/8	3,17	5/16-24	2,03	7/16	11,11	7,62	30,48	-902
CAM 4 - 4U	1/4	6,35	7/16-20	4,32	9/16	14,28	9,14	35,31	-904
CAM 6 - 4U	3/8	9,52	7/16-20	5,08	9/16	14,28	9,14	37,08	-904
CAM 6 - 6U	3/8	9,52	9/16-18	6,86	11/16	17,46	9,90	38,61	-906
CAM 6 - 8U	3/8	9,52	3/4-16	6,86	7/8	22,22	11,17	40,64	-908
CAM 8 - 6U	1/2	12,7	9/16-18	7,11	11/16	17,46	9,90	44,19	-906
CAM 8 - 8U	1/2	12,7	3/4-16	9,40	7/8	22,22	11,17	46,23	-908
CAM 10 - 10U	5/8	15,87	7/8-14	11,94	1	25,40	12,70	49,27	-910
CAM 12 - 12U	3/4	19,05	1 1/16-12	14,73	1 1/4	31,75	14,98	53,34	-912
CAM 16 - 16U	1	25,40	1 5/16-12	20,32	1 1/2	38,10	14,98	61,21	-916
CAM 20 - 20U	1 1/4	31,75	1 5/8-12	25,91	1 7/8	47,62	14,98	71,37	-920
CAM 24 - 24U	1 1/2	38,10	1 7/8-12	31,75	2 1/8	53,97	14,98	83,31	-924
CAM 32 - 32U	2	50,80	2 1/2-12	43,69	2 3/4	69,85	14,98	107,44	-932

All dimensions are in millimeters unless otherwise specified. Dimensions are for reference only, subject to change.