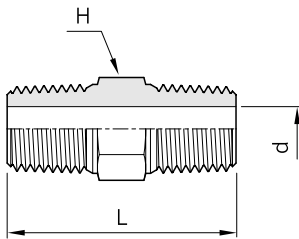


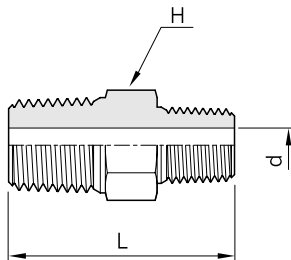
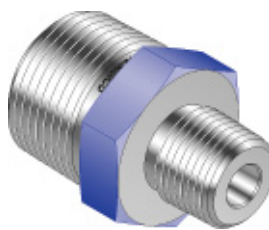
## Pipe Fittings

### Hex Nipple H-SNA



Nom. Pipe Size	L	d	H Width Across Flat
1/8	25.4	4.8	11.1
1/4	35.3	7.1	14.2
3/8	36.1	9.6	17.4
1/2	46.7	11.9	22.2
3/4	46.7	15.7	26.9
1	58.7	22.3	34.9
1 1/4	61.2	27.7	44.4
1 1/2	67.3	34.0	50.0
2	73.7	46.0	70.0

### Hex Reducing Nipple H-SNR



Nom. Pipe Size	Reduced Nom. Pipe Size	L	d	H Width Across Flat
1/4	1/8	30.7	4.8	14.2
3/8	1/8	32.0	4.8	17.4
3/8	1/4	36.1	7.1	17.4
1/2	1/8	37.2	4.8	22.2
1/2	1/4	41.7	7.1	22.2
1/2	3/8	41.7	9.6	22.2
3/4	1/4	41.7	7.1	26.9
3/4	1/2	46.7	11.9	26.9
1	1/4	49.3	7.1	34.9
1	1/2	54.1	11.9	34.9
1 1/4	1	61.2	22.3	44.4
1 1/2	1	65.8	22.3	50.0
2	1	71.6	22.3	70.0

All dimensions are in millimeters.