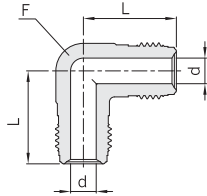
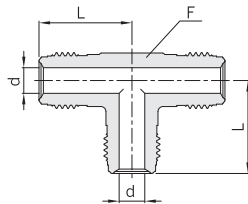


High Flow Union Elbow  
**H-ZHLA**



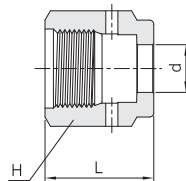
Part No.	ZCR Size	d		L		F Body Flat	Working Pressure psig (bar)		
		mm	in.	mm	in.		NI	SS	CU
H-ZHLA-4	1/4	6.35	0.25	27.2	1.07	1/2	8000 (551)	10000 (689)	6400 (440)

High Flow Union Tee  
**H-ZHTA**



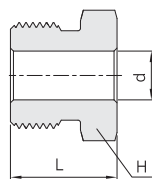
Part No.	ZCR Size	d		L		F Body Flat	Working Pressure psig (bar)		
		mm	in.	mm	in.		NI	SS	CU
H-ZHTA-4	1/4	6.35	0.25	27.2	1.07	1/2	8000 (551)	10000 (689)	6400 (440)

High Flow Female Nut  
**H-ZHFN**



Part No.	ZCR Size	d		L		H
		mm	in.	mm	in.	in.
H-ZHFN-4	1 / 4	9.9	0.39	20.6	0.81	3/4

High Flow Male Nut  
**H-ZHMN**



Part No.	ZCR Size	d		L		H
		mm	in.	mm	in.	in.
H-ZHMN-4	1 / 4	9.9	0.39	18.0	0.71	5/8

Dimensions are reference only, subject to change.