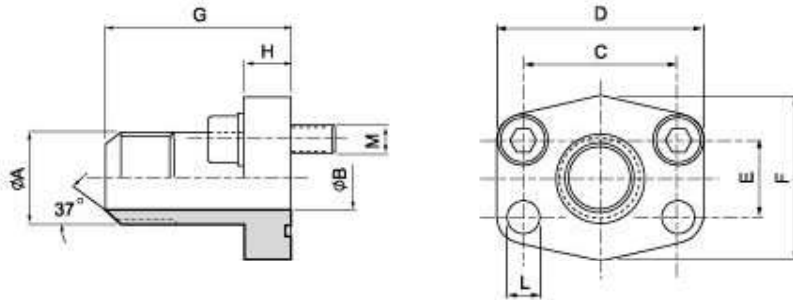


SAE J 518 C 61/62 Flanges

SAE - JIC 37° flared connection

SAAFG - J



Maximum recommended working pressure kg/cm ²	Nominal flange size, in	Type	Dimensions									Screws		Weight kg
			A	B	C	D	E	F	G	H	L	M		
												metr.	unc	
Standard Pressure														
350	1/2"	SAAFG 308-08J	3/8"-16 JIC	9.9	38.10	54	17.48	46	52	13	9.0	M 8 x 30	5/16 x 1 1/4	0.25
350	1/2"	SAAFG 308-10J	3/8"-14 JIC	12.3	38.10	54	17.48	46	52	13	9.0	M 8 x 30	5/16 x 1 1/4	0.30
350	3/4"	SAAFG 312-12J	1 1/16"-12 JIC	15.5	47.63	65	22.23	50	60	14	11.0	M 10 x 30	5/16 x 1 1/4	0.35
350	1"	SAAFG 316-16J	1 3/16"-12 JIC	21.5	52.37	70	26.19	55	63	16	11.0	M 10 x 30	5/16 x 1 1/4	0.50
280	1 1/2"	SAAFG 320-20J	1 5/8"-12 JIC	27.5	58.72	79	30.18	68	65	14	11.5	M 10 x 30	5/16 x 1 1/2	0.70
280	1 1/2"	SAAFG 320-16J	1 5/8"-12 JIC	21.5	58.72	79	30.18	68	65	14	11.5	M 10 x 30	5/16 x 1 1/2	0.70
210	1 1/2"	SAAFG 324-24J	1 7/8"-12 JIC	33.0	69.85	94	35.71	78	70	16	13.5	M 12 x 35	5/8 x 1 1/2	1.00
High Pressure														
420	1/2"	SAAFG 608-08J	3/8"-16 JIC	9.9	40.49	56	18.24	48	60	16	9.0	M 8 x 30	5/16 x 1 1/4	0.30
420	1/2"	SAAFG 608-10J	3/8"-14 JIC	12.3	40.49	56	18.24	48	60	16	9.0	M 8 x 30	5/16 x 1 1/4	0.40
420	3/4"	SAAFG 612-12J	1 1/16"-12 JIC	15.5	50.80	71	23.80	60	73	19	11.0	M 10 x 35	5/16 x 1 1/4	0.70
420	1"	SAAFG 616-16J	1 3/16"-12 JIC	21.5	57.15	81	27.76	70	82	24	12.5	M 12 x 45	5/16 x 1 1/4	1.00
420	1 1/2"	SAAFG 620-20J	1 5/8"-12 JIC	27.5	66.68	95	31.75	78	92	27	14.5	M 14 x 45	5/8 x 1 1/4	1.50
420	1 1/2"	SAAFG 620-16J	1 5/8"-12 JIC	21.5	66.68	95	31.75	78	92	27	14.5	M 14 x 45	5/8 x 1 1/4	1.50
420	1 1/2"	SAAFG 624-24J	1 7/8"-12 JIC	33.0	79.38	113	36.50	95	96	30	17.0	M 16 x 50	5/8 x 2	2.30