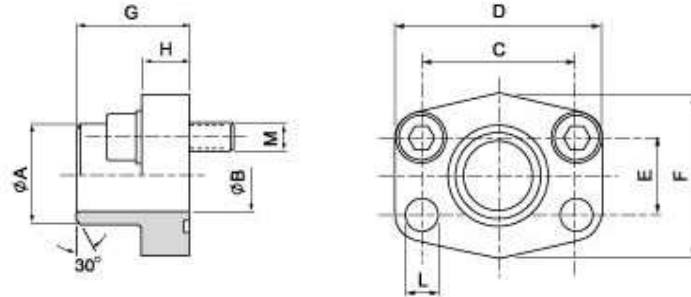


SAE J 518 C 61/62 Flanges

SAE - weld on flange

SAAFS - BW



Maximum recommended working pressure kg/cm ²	Nominal flange size, in	Type	Dimensions									Screws		Weight kg
			A	B	C	D	E	F	G	H	L	M		
												metr.	unc.	
Standard Pressure														
350	½"	SAAFS 308-08 BBW	21.6	14	38.10	54	17.48	46	36	16	9.0	M 8 x 30	⅝ x 1¼	0.28
350	¾"	SAAFS 312-12 BBW	27.2	19	47.63	65	22.23	50	36	18	11.0	M 10 x 35	⅝ x 1½	0.39
350	1"	SAAFS 316-16 BBW	34.0	24	52.37	70	26.19	55	38	18	11.0	M 10 x 35	⅝ x 1½	0.46
280	1¼"	SAAFS 320-20 BBW	42.8	32	58.72	79	30.18	68	41	21	11.5	M 10 x 40	⅝ x 1½	0.66
210	1½"	SAAFS 324-24 BBW	48.6	38	69.85	93	35.71	78	45	25	13.5	M 12 x 45	⅝ x 1¾	1.05
210	2"	SAAFS 332-32 BBW	61.0	49	77.77	102	42.88	90	45	25	13.5	M 12 x 45	⅝ x 1¾	1.19
175	2½"	SAAFS 340-40 BBW	73.5	59	88.90	114	50.80	105	50	25	13.5	M 12 x 45	⅝ x 1¾	1.40
140	3"	SAAFS 348-48 BBW	90.5	74	106.38	134	61.93	124	50	27	17.0	M 16 x 50	⅝ x 2	2.15
35	3½"	SAAFS 356-56 BBW	103.0	85	120.65	152	69.85	136	48	27	17.0	M 16 x 50	⅝ x 2	2.40
35	4"	SAAFS 364-64 BBW	115.0	97	130.18	162	77.77	146	48	27	17.0	M 16 x 50	⅝ x 2	2.85
35	5"	SAAFS 380-80 BBW	143.0	120	152.40	184	92.08	180	50	28	17.0	M 16 x 55	⅝ x 2	5.20
High Pressure														
420	½"	SAAFS 608-08 CBW	21.6	12	40.49	54	18.24	46	36	16	9.0	M 8 x 30	⅝ x 1¼	0.29
420	¾"	SAAFS 612-12 CBW	27.2	16	50.80	71	23.80	55	35	21	11.0	M10 x 35	⅝ x 1½	0.50
420	1"	SAAFS 616-16 CBW	34.0	21	57.15	79	27.76	68	41	21	12.5	M 12 x 45	⅝ x 1¾	0.76
414	1¼"	SAAFS 620-20 CBW	42.8	29	66.68	93	31.75	78	44	25	14.5	M 14 x 45	⅝ x 1¾	1.20
414	1½"	SAAFS 624-24 CBW	48.6	34	79.38	112	36.50	94	55	30	17.0	M 16 x 50	⅝ x 2	1.65
414	2"	SAAFS 632-32 CBW	61.0	43	96.82	134	44.45	114	65	37	21.0	M 20 x 65	⅝ x 2½	2.45
420	2½"	SAAFS 640-40 CBW	73.5	54	123.80	180	58.70	152	80	45	26.0	M 24 x 75	-	6.40