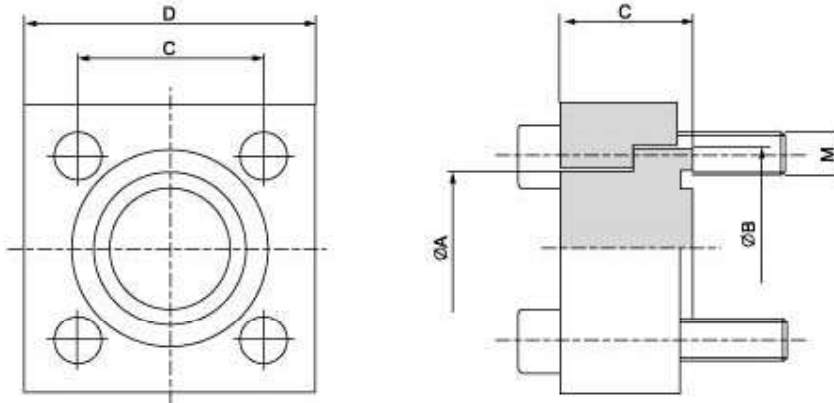


ISO 6164 Flanges

Cetop - flange plug

SABS



Maximum recommended working pressure kg/cm ²	Nominal flange size, in	Type	Dimensions					Screws	Weight kg
			A	B	C	D	E	M	
Nominal pressure 250bar									
250	3/8"	SABS 2506	18	24.5	24.7	40	15	M 6 x 25	0.04
250	1/2"	SABS 2508	24	30.2	29.7	45	16	M 8 x 30	0.07
250	3/4"	SABS 2512	31.5	38.1	35.3	50	17	M 8 x 30	0.13
250	1"	SABS 2516	38	44.5	43.8	65	19	M 10 x 35	0.19
250	1 1/4"	SABS 2520	43	50.8	51.6	75	23	M 12 x 40	0.30
250	1 1/2"	SABS 2524	50	60.3	60.0	85	26	M 14 x 45	0.46
250	2"	SABS 2532	62	71.4	69.4	100	31	M 16 x 55	0.82
250	2 1/2"	SABS 2540	76	87.2	83.4	120	37	M 20 x 65	1.44
250	3"	SABS 2548	90	101.6	102.5	140	42	M 20 x 75	2.25
250	3 1/2"	SABS 2556	102	119.0	102.5	140	54	M 20 x 90	3.90
250	4"	SABS 2564	114	131.0	114.5	160	62	M 24 x 100	5.54
Nominal pressure 400bar									
400	3/8"	SABS 4006	18	26.0	24.7	40	16	M 6 x 25	0.05
400	1/2"	SABS 4008	24	31.8	29.7	45	18	M 8 x 30	0.09
400	3/4"	SABS 4012	32	41.3	35.3	50	20	M 8 x 35	0.17
400	1"	SABS 4016	38	47.6	43.8	65	24	M 10 x 40	0.27
400	1 1/4"	SABS 4020	44	54.0	51.6	75	28	M 12 x 50	0.44
400	1 1/2"	SABS 4024	51	63.5	60.3	85	32	M 14 x 55	0.65
400	2"	SABS 4032	67	79.4	69.4	100	40	M 16 x 65	1.32
400	2 1/2"	SABS 4040	80	94.2	83.4	120	45	M 20 x 75	2.13
400	3"	SABS 4048	90	104.0	102.5	160	52	M 24 x 90	3.00
400	3 1/2"	SABS 4056	102	119.0	113.1	160	52	M 24 x 90	3.90
400	4"	SABS 4064	114	131.0	123.7	180	60	M 24 x 100	5.54