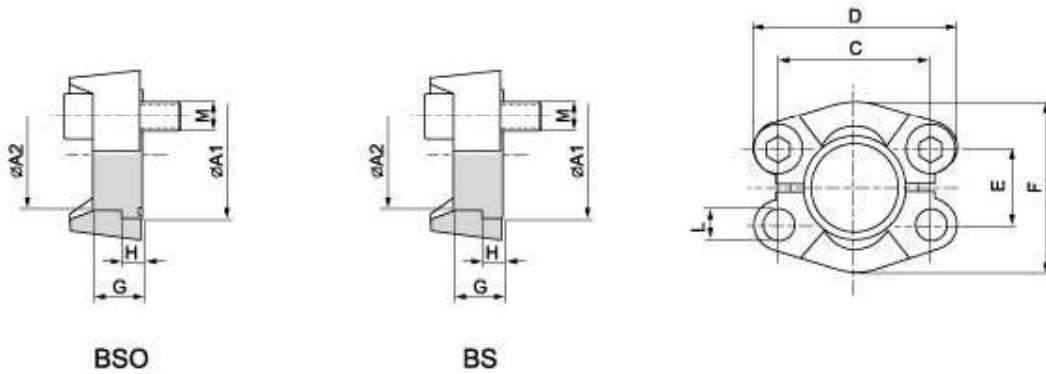


# SAE J 518 C 61/62 Flanges

SAE - flange plug

**SABSO / BS**



Maximum recommended working pressure kg/cm <sup>2</sup>	Nominal flange size, in	Type	Dimensions									Screws		Weight kg	
			A1	A2	C	D	E	F	G	H	L	M			
												metr.	unc		
		<b>Standard Pressure</b>													
350	1/2"	SA/BSO 308	30.2	23.9	38.10	54	17.48	45.6	16	6.9	9.0	M 8 x 25	5/8 x 1 1/2	0.18	
350	3/8"	SA/BSO 312	38.1	31.7	47.63	65	22.23	51.8	17	6.9	11.0	M 10 x 30	5/8 x 1 1/2	0.20	
350	1"	SA/BSO 316	44.4	38.1	52.37	70	26.19	58.4	17	8.1	11.0	M 10 x 30	5/8 x 1 1/2	0.26	
280	1 1/4"	SA/BSO 320	50.8	42.3	58.72	79	30.18	72.6	17	8.1	11.5	M 10 x 30	5/8 x 1 1/2	0.36	
210	1 1/2"	SA/BSO 324	60.3	50.3	69.85	93	35.71	82.2	19	8.1	13.5	M 12 x 35	5/8 x 1 1/2	0.54	
210	2"	SA/BSO 332	71.4	62.2	77.77	102	42.88	96.4	19	9.7	13.5	M 12 x 35	5/8 x 1 1/2	0.60	
175	2 1/2"	SA/BSO 340	84.1	74.0	88.90	114	50.80	108.0	40	9.5	13.5	M 12 x 35	5/8 x 1 1/2	0.87	
140	3"	SA/BSO 348	101.6	90.0	106.38	135	61.93	130.6	45	9.5	17.0	M 16 x 50	5/8 x 2	1.56	
35	3 1/2"	SA/BSO 356	114.3	102.0	120.65	152	69.85	139.0	30	11.2	17.0	M 16 x 50	5/8 x 2	1.80	
35	4"	SA/BSO 364	127.0	114.0	130.18	162	77.77	152.0	36	11.2	17.0	M 16 x 50	5/8 x 2	1.98	
35	5"	SA/BSO 380	152.4	140.0	152.40	184	92.08	180.0	45	11.2	17.0	M 16 x 50	5/8 x 2	3.00	
		<b>High Pressure</b>													
420	1/2"	SA/BSO 608	31.7	23.9	40.49	56	18.24	47.2	18	7.9	9.0	M 8 x 30	5/8 x 1 1/2	0.19	
420	3/8"	SA/BSO 612	41.3	31.7	50.80	71	23.80	60.0	15	8.9	11.0	M 10 x 35	5/8 x 1 1/2	0.42	
420	1"	SA/BSO 616	47.6	38.1	57.15	81	27.76	69.6	16	9.7	12.5	M 12 x 45	5/8 x 1 1/2	0.64	
420	1 1/4"	SA/BSO 620	54.0	43.7	66.68	95	31.75	77.2	16	10.4	14.5	M 14 x 50	5/8 x 1 1/2	0.96	
420	1 1/2"	SA/BSO 624	63.5	50.8	79.38	113	36.50	95.0	19	12.7	17.0	M 16 x 55	5/8 x 2	1.62	
420	2"	SA/BSO 632	79.4	66.5	96.82	133	44.45	113.8	30	12.7	21.0	M 20 x 65	5/8 x 2 1/2	2.52	
420	2 1/2"	SA/BSO 640	108.0	90.0	123.80	180	58.70	150.2	45	21.2	26.0	M 24 x 75	-	4.92	
420	3"	SA/BSO 648	132.0	114.0	152.40	215	71.60	198.16	55	26.5	31.0	M 30 x 90	-	10.32	