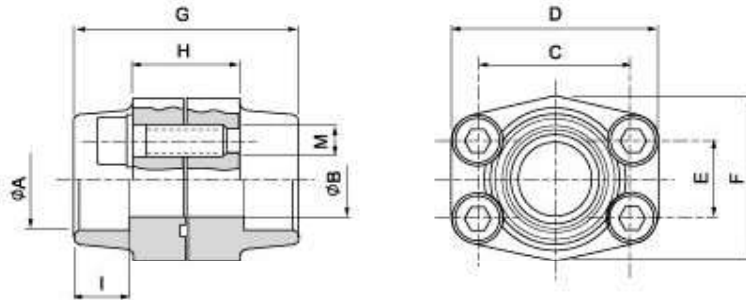


SAE J 518 C 61/62 Flanges

SAE - socket weld flange

SADFS - SW



Maximum recommended working pressure kg/cm ²	Nominal flange size, in	Type	Dimensions									Screws		Weight kg
			A	B	C	D	E	F	G	H	I	M		
												metr.	unc	
Standard Pressure														
350	½"	SADFS 308-08 SW	21.6	13	38.10	54	17.48	46	72	32	19	M 8 x 30	⅝ x 1½	0.50
350	¾"	SADFS 312-12 SW	27.2	19	47.63	65	22.23	50	72	36	19	M 10 x 35	⅝ x 1½	0.78
350	1"	SADFS 316-16 SW	34.0	25	52.37	70	26.19	55	76	36	19	M 10 x 35	⅝ x 1½	0.92
280	1½"	SADFS 320-20 SW	42.8	32	58.72	79	30.18	68	82	42	22	M 10 x 40	⅝ x 1½	1.32
210	1½"	SADFS 324-24 SW	48.6	38	69.85	93	35.71	78	90	50	24	M 12 x 45	⅝ x 1½	2.10
210	2"	SADFS 332-32 SW	61.0	51	77.77	102	42.88	90	90	50	26	M 12 x 45	⅝ x 1½	2.38
175	2½"	SADFS 340-40 SW	73.5	63	88.90	114	50.80	105	100	50	30	M 12 x 45	⅝ x 1½	2.80
140	3"	SADFS 348-48 SW	90.5	76	106.38	134	61.93	124	100	54	34	M 16 x 50	⅝ x 2	4.30
35	3½"	SADFS 356-56 SW	103.0	89	120.65	152	69.85	136	96	54	34	M 16 x 50	⅝ x 2	4.80
35	4"	SADFS 364-64 SW	115.0	102	130.18	162	77.77	146	96	54	34	M 16 x 50	⅝ x 2	5.70
High Pressure														
420	½"	SADFS 608-08 SW	21.6	13	40.49	54	18.24	46	72	32	19	M 8 x 30	⅝ x 1½	0.52
420	¾"	SADFS 612-12 SW	27.2	19	50.80	71	23.80	55	70	42	22	M 10 x 35	⅝ x 1½	1.00
420	1"	SADFS 616-16 SW	34.0	25	57.15	81	27.76	65	84	50	22	M 12 x 45	⅝ x 1½	1.52
420	1½"	SADFS 620-20 SW	42.8	32	66.68	95	31.75	78	90	54	25	M 14 x 45	⅝ x 1½	2.40
420	1½"	SADFS 624-24 SW	48.6	38	79.38	112	36.50	94	100	60	8	M 16 x 50	⅝ x 2	3.30
420	2"	SADFS 632-32 SW	61.0	51	96.82	134	44.45	114	130	74	24	M 20 x 65	⅝ x 2½	4.90