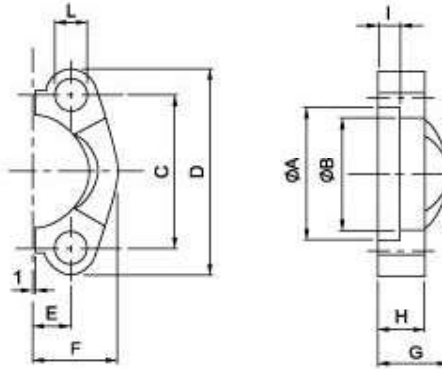


SAE-split flange halves

SAE - split flange halves

SAFH



Maximum recommended working pressure kg/cm ²	Nominal flange size, in	Type	Dimensions										screws		Weight kg	
			A	B	C	D	E	F	G	H	I	L	metr.	unc		
		Standard Pressure														
350	½"	SAFH 308	30.96	24.26	38.10	54	8.74	22.8	19	13	6.22	9.0	M 8 x 25	⅝ x 1½	0.07	
350	¾"	SAFH 312	38.89	32.13	47.63	65	11.13	25.9	22	14	6.22	11.0	M 10 x 30	⅝ x 1½	0.09	
350	1"	SAFH 316	45.24	38.48	52.37	70	13.08	29.2	24	16	7.49	11.0	M 10 x 30	⅝ x 1½	0.11	
280	1¼"	SAFH 320	51.59	43.69	58.72	79	15.09	36.3	22	16	7.49	11.5	M 10 x 35	⅝ x 1½	0.15	
210	1½"	SAFH 324	61.09	50.80	69.85	94	17.86	41.1	25	16	7.49	13.5	M 12 x 35	⅝ x 1½	0.23	
210	2"	SAFH 332	72.24	62.74	77.77	102	21.44	48.2	26	16	9.02	13.5	M 12 x 35	⅝ x 1½	0.25	
175	2½"	SAFH 340	84.94	74.93	80.90	114	25.40	54.1	38	19	9.02	13.5	M 12 x 40	⅝ x 1½	0.37	
140	3"	SAFH 348	102.39	90.93	106.38	135	30.96	65.3	41	22	9.02	17.0	M 16 x 45	⅝ x 2	0.65	
35	3½"	SAFH 356	115.10	102.36	120.65	152	34.92	69.5	28	22	10.72	17.0	M 16 x 45	⅝ x 2	0.75	
35	4"	SAFH 364	127.79	115.06	130.18	162	38.88	76.0	35	25	10.72	17.0	M 16 x 50	⅝ x 2	0.84	
35	5"	SAFH 380	153.19	140.46	152.40	184	46.04	90.0	41	28	10.72	17.0	M 16 x 50	⅝ x 2	1.25	
		High Pressure														
420	½"	SAFH 608	32.54	24.64	40.49	56	9.12	23.6	22	16	7.24	9.0	M 8 x 30	⅝ x 1¼	0.08	
420	¾"	SAFH 612	42.06	32.51	50.80	71	11.91	30.0	28	19	8.26	11.0	M 10 x 35	⅝ x 1½	0.18	
420	1"	SAFH 616	48.41	38.86	57.17	81	3.89	34.8	33	24	9.02	12.5	M 12 x 45	⅝ x 1¼	0.27	
420	1¼"	SAFH 620	54.76	44.45	66.68	95	15.88	38.6	38	27	9.78	14.5	M 14 x 50	⅝ x 1¼	0.40	
420	1½"	SAFH 624	64.29	51.56	79.38	113	18.26	47.5	43	30	12.07	17.0	M 16 x 55	⅝ x 2	0.68	
420	2"	SAFH 632	80.16	67.56	96.82	133	22.23	56.9	52	37	12.07	21.0	M 20 x 65	⅝ x 2½	1.05	