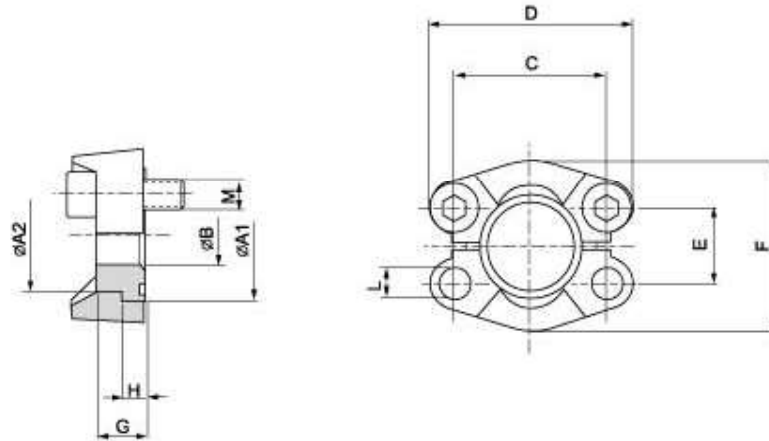


SAE J 518 C 61/62 Flanges

SAE - flange head

SAFT



Maximum recommended working pressure kg/cm ²	Nominal flange size, in	Type	Dimensions										Screws		Weight kg	
			A1	A2	B	C	D	E	F	G	H	L	M			
													metr.	unc.		
		Standard Pressure														
350	½"	SAFT 308	30.2	23.9	0/10	38.10	54	17.48	45.6	16	6.9	9.0	M 8 x 25	⅝ x 1½	0.17	
350	¾"	SAFT 312	38.1	31.7	0/15	47.63	65	22.23	51.8	17	6.9	11.0	M 10 x 30	⅝ x 1½	0.19	
350	1"	SAFT 316	44.4	38.1	0/20	52.37	70	26.19	58.4	17	8.1	11.0	M 10 x 30	⅝ x 1½	0.25	
280	1½"	SAFT 320	50.8	43.2	0/27	58.72	79	30.18	72.6	17	8.1	11.5	M 10 x 30	⅝ x 1½	0.35	
210	1½"	SAFT 324	60.3	50.3	0/32	69.85	94	35.71	82.2	19	8.1	13.5	M 12 x 35	⅝ x 1½	0.53	
210	2"	SAFT 332	71.4	62.2	0/40	77.77	102	42.88	96.4	19	9.7	13.5	M 12 x 35	⅝ x 1½	0.59	
175	2½"	SAFT 340	84.1	74.0	0/50	88.90	114	50.80	108.2	30	9.7	13.5	M 12 x 35	⅝ x 1½	0.86	
		High Pressure														
420	½"	SAFT 608	31.7	23.9	0/10	40.49	56	18.24	47.2	16	7.9	8.5	M 8 x 30	⅝ x 1½	0.18	
420	¾"	SAFT 612	41.3	31.7	0/15	50.80	71	23.80	60	20	8.9	10.5	M 10 x 35	⅝ x 1½	0.41	
420	1"	SAFT 616	47.6	38.1	0/20	57.15	81	27.76	69.6	22	9.7	12.5	M 12 x 45	⅝ x 1½	0.63	
420	1½"	SAFT 620	54.0	43.7	0/27	66.68	95	31.75	77.2	27	10.4	14.5	M 14 x 50	⅝ x 1½	0.95	
420	1½"	SAFT 624	63.5	50.8	0/32	79.38	113	36.50	95.0	32	12.7	17.0	M 16 x 55	⅝ x 2	1.61	
420	2"	SAFT 632	79.4	66.5	0/40	96.82	133	44.45	113.8	40	12.7	21.0	M 20 x 65	⅝ x 2½	2.51	