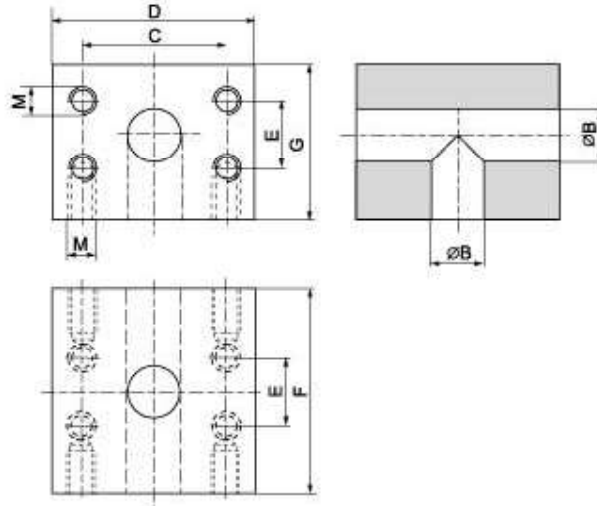


SAE J 518 C 61/62 Flanges

SAE - T - block - companion flange

SAT - BL



Maximum recommended working pressure kg/cm ²	Nominal flange size, in	Type	Dimensions							Weight kg
			B	C	D	E	F	G	M	
		Standard Pressure								
350	½"	SAT-BL-308	13	38.10	55	17.48	70	50	M 8	1.4
350	¾"	SAT-BL-312	19	47.63	65	22.23	75	55	M 10	1.8
350	1"	SAT-BL-316	25	52.37	70	26.19	80	60	M 10	2.3
280	1½"	SAT-BL-320	32	58.72	80	30.18	90	70	M 10	3.9
210	1½"	SAT-BL-324	38	69.85	95	35.71	110	85	M 12	6.3
210	2"	SAT-BL-332	50	77.77	100	42.88	120	110	M 12	8.3
175	2½"	SAT-BL-340	63	88.90	120	50.80	160	120	M 12	11.6
140	3"	SAT-BL-348	73	106.38	135	61.93	160	160	M 16	15.3
		High Pressure								
420	½"	SAT-BL-608	12	40.49	60	18.24	90	50	M 8	1.3
420	¾"	SAT-BL-612	19	50.80	72	23.80	72	55	M 10	1.7
420	1"	SAT-BL-616	23	57.15	82	27.76	80	64	M 12	2.9
420	1¼"	SAT-BL-620	30	66.68	100	31.75	92	72	M 14	3.8
420	1½"	SAT-BL-624	38	79.38	110	36.50	100	100	M 16	8.9
420	2"	SAT-BL-632	50	96.82	133	44.45	140	105	M 20	12.7
420	2½"	SAT-BL-640	62	123.80	180	58.80	180	155	M 24	16.5