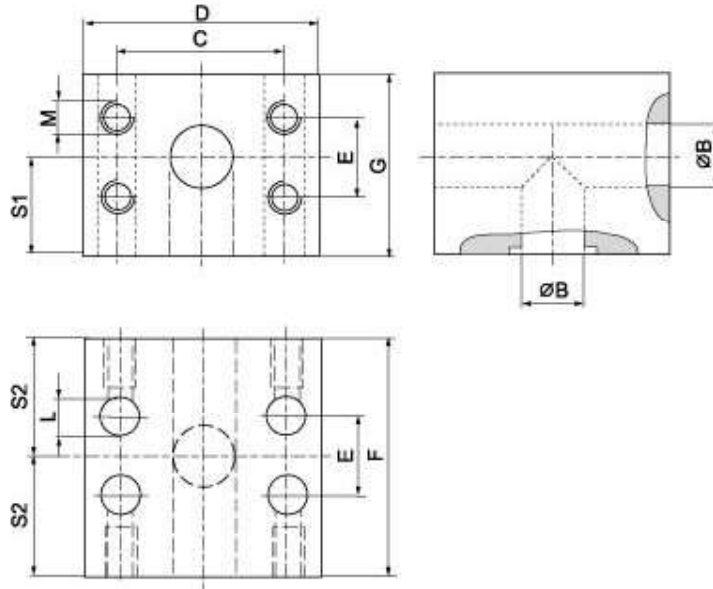


SAE J 518 C 61/62 Flanges

SAE - T - block

SAT - GD



Maximum recommended working pressure kg/cm ²	Nominal flange size, in	Type	Dimensions										Weight kg	
			B	C	D	E	F	G	L	M	S1	S2		
		High Pressure												
420	¾"	SAT-GD 612	19	50.80	72	23.80	72	55	11	M 10	32	36	1.7	
420	1"	SAT-GD 616	23	57.15	82	27.76	80	64	13	M 12	37	40	2.9	
420	1¼"	SAT-GD 620	30	66.68	96	31.75	92	72	15	M 14	41	46	3.8	
420	1½"	SAT-GD 624	38	79.38	114	36.50	104	89	17	M 16	50	52	8.9	
420	2"	SAT-GD 632	50	96.82	133	44.45	140	105	21	M 20	63	70	12.7	