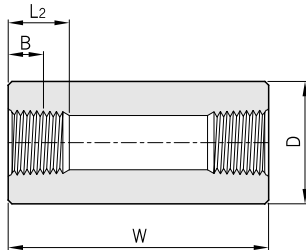
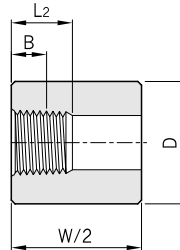
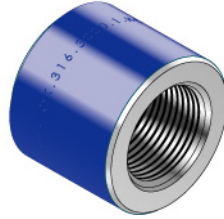


## Pipe Fittings

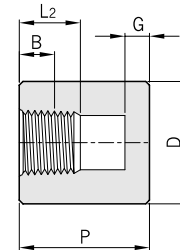
### Full Coupling SFC



### Half Coupling SHC



### Cap SCA



## ASME B16.11

Class Designation of Fittings	Nom. Pipe Size	DN	End-to-End Coupling W	End-to-End Coupling P	Outside Diameter D	End Wall Thickness Min. G	Min.Length of Thread <sup>(1)</sup>	
							B	L <sub>2</sub>
3000	1/8	6	32	19	16	4.8	6.4	6.7
	1/4	8	35	25	19	4.8	8.1	10.2
	3/8	10	38	25	22	4.8	9.1	10.4
	1/2	15	48	32	28	6.4	10.9	13.6
	3/4	20	51	37	35	6.4	12.7	13.9
	1	25	60	41	44	9.7	14.7	17.3
	1 1/4	32	67	44	57	9.7	17.0	18.0
	1 1/2	40	79	44	64	11.2	17.8	18.4
	2	50	86	48	76	12.7	19.0	19.2
	2 1/2	65	92	60	92	15.7	23.6	28.9
	3	80	108	65	108	19.0	25.9	30.5
	4	100	121	68	140	22.4	27.7	33.0

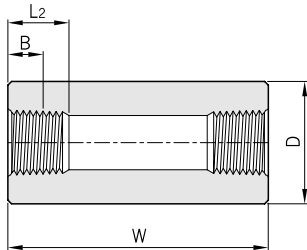
**General Note :** (A) Class 2000 and NPS 1/8 Class 6000 couplings, half couplings, and caps are not included in this standard.

(B) The wall thickness away from the threaded ends shall meet the minimum wall thickness requirements listed on page 21 for the appropriate NPS and Class Designation fitting.

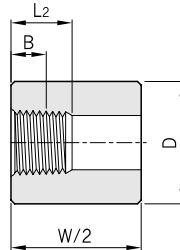
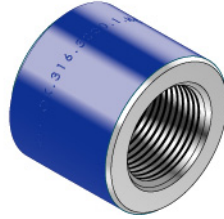
**Note :** (1) Dimension B is minimum length of perfect thread. The length of useful thread(B plus threads with fully formed roots and flat crests) shall not be less than L<sub>2</sub> (effective length of external thread) required by American National Standard for pipe threads (ASME B1.20.1)

All dimensions are in millimeters.

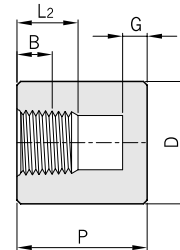
Full Coupling  
**SFC**



Half Coupling  
**SHC**



Cap  
**SCA**



**ASME B16.11**

Class Designation of Fittings	Nom. Pipe Size	DN	End-to-End Coupling W	End-to-End Coupling P	Outside Diameter D	End Wall Thickness Min. G	Min.Length of Thread <sup>(1)</sup>	
							B	L <sub>2</sub>
6000	1/8	6	32	-	22	-	6.4	6.7
	1/4	8	35	27	25	6.4	8.1	10.2
	3/8	10	38	27	32	6.4	9.1	10.4
	1/2	15	48	33	38	7.9	10.9	13.6
	3/4	20	51	38	44	7.9	12.7	13.9
	1	25	60	43	57	11.2	14.7	17.3
	1 1/4	32	67	46	64	11.2	17.0	18.0
	1 1/2	40	79	48	76	12.7	17.8	18.4
	2	50	86	51	92	15.7	19.0	19.2
	2 1/2	65	92	64	108	19.0	23.6	28.9
	3	80	108	68	127	22.4	25.9	30.5
	4	100	121	75	159	28.4	27.7	33.0

**General Note :** (A) Class 2000 and NPS 1/8 Class 6000 couplings, half couplings, and caps are not included in this standard.

(B) The wall thickness away from the threaded ends shall meet the minimum wall thickness requirements listed on page 22 for the appropriate NPS and Class Designation fitting.

**Note :** (1) Dimension B is minimum length of perfect thread. The length of useful thread(B plus threads with fully formed roots and flat crests) shall not be less than L<sub>2</sub> (effective length of external thread) required by American National Standard for pipe threads (ASME B1.20.1)

All dimensions are in millimeters.