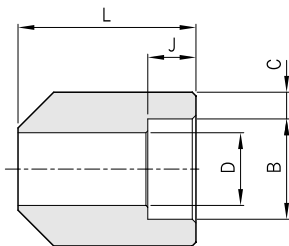
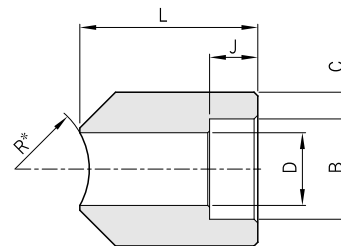


Pipe Fittings

Boss Type A SWBA



Boss Type R SWBR



ASME B16.11

Class Designation of Fittings	Nom. Pipe Size	B Socket Bore Dia. ⁽¹⁾	D Bore Dia. ⁽¹⁾	Socket Wall Thk. C ⁽²⁾	Depth of socket Min. J	L
3000	1/4	14.6	10.0	3.78	9.5	40
		14.2	8.5	3.30		
	3/8	18.0	13.3	4.01	9.5	50
		17.6	11.8	3.50		
	1/2	22.2	16.6	4.67	9.5	50
		21.8	15.0	4.09		
	3/4	27.6	21.7	4.90	12.5	50
		27.2	20.2	4.27		
1	34.3	27.4	5.69	12.5	50	
	33.9	25.9	4.98			
1 1/4	43.1	35.8	6.07	12.5	50	
	42.7	34.3	5.28			
1 1/2	49.2	41.6	6.35	12.5	50	
	48.8	40.1	5.54			
2	61.7	53.3	6.93	16.0	60	
	61.2	51.7	6.04			
6000	1/2	22.2	12.5	5.97	9.5	50
		21.8	11.0	5.18		
	3/4	27.6	16.3	6.96	12.5	50
		27.2	14.8	6.04		
	1	34.3	21.5	7.92	12.5	50
		33.9	19.9	6.93		
	1 1/4	43.1	30.2	7.92	12.5	50
		42.7	28.7	6.93		
1 1/2	49.2	34.7	8.92	12.5	50	
	48.8	33.2	7.80			
2	61.7	43.6	10.92	16.0	50	
	61.2	42.1	9.50			

Note : * is run pipe sizes

Example : SWBR06A-3000-R34 / S316 - 3/4" NPS CL3000 Run pipe 34.0mm O.D

(1) Upper and lower values for each size are the respective maximum and minimum dimensions.

(2) Average of socket wall thickness around periphery shall be no less than listed values. The minimum values are permitted in localized areas.

Dimensions are in millimeters.