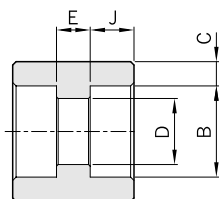
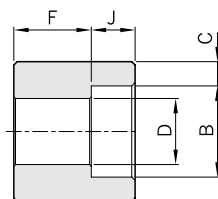


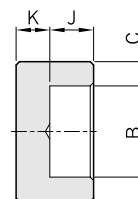
Full Coupling
SWFC



Half Coupling
SWHC



Cap
SWCA



ASME B16.11

Class Designation of Fittings	Nom. Pipe Size	DN	B Socket Bore Dia. ⁽¹⁾	D Bore Dia. ⁽¹⁾	Socket Wall Thk. C ⁽²⁾	Depth of socket Min. J	E	F	K Min.
3000	1/8	6	11.2 10.8	7.6 6.1	3.18 3.18	9.5	6.5	16.0	4.8
	1/4	8	14.6 14.2	10.0 8.5	3.78 3.30	9.5	6.5	16.0	4.8
	3/8	10	18.0 17.6	13.3 11.8	4.01 3.50	9.5	6.5	17.5	4.8
	1/2	15	22.2 21.8	16.6 15.0	4.67 4.09	9.5	9.5	22.5	6.4
	3/4	20	27.6 27.2	21.7 20.2	4.90 4.27	12.5	9.5	24.0	6.4
	1	25	34.3 33.9	27.4 25.9	5.69 4.98	12.5	12.5	28.5	9.6
	1 1/4	32	43.1 42.7	35.8 34.3	6.07 5.28	12.5	12.5	30.0	9.6
	1 1/2	40	49.2 48.8	41.6 40.1	6.35 5.54	12.5	12.5	32.0	11.2
	2	50	61.7 61.2	53.3 51.7	6.93 6.04	16.0	19.0	41.0	12.7
	2 1/2	65	74.4 73.9	64.2 61.2	8.76 7.67	16.0	19.0	43.0	15.7
	3	80	90.3 89.8	79.4 76.4	9.52 8.30	16.0	19.0	44.5	19.0
	4	100	115.7 115.2	103.8 100.7	10.69 9.35	19.0	19.0	48.0	22.4

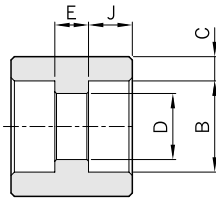
Note : (1) Upper and lower values for each size are the respective maximum and minimum dimensions.

(2) Average of socket wall thickness around periphery shall be no less than listed values. The minimum values are permitted in localized areas.

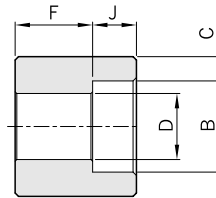
All dimensions are in millimeters.

Pipe Fittings

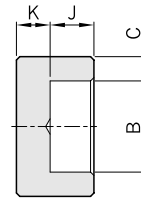
Full Coupling SWFC



Half Coupling SWHC



Cap SWCA



ASME B16.11

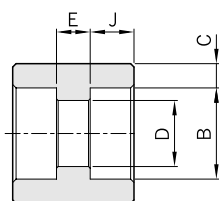
Class Designation of Fittings	Nom. Pipe Size	DN	B Socket Bore Dia. ⁽¹⁾	D Bore Dia. ⁽¹⁾	Socket Wall Thk. C ⁽²⁾	Depth of socket Min. J	E	F	K Min.
6000	1/8	6	11.2 10.8	4.8 3.2	3.96 3.43	9.5	6.5	16.0	6.4
	1/4	8	14.6 14.2	7.1 5.6	4.60 4.01	9.5	6.5	16.0	6.4
	3/8	10	18.0 17.6	9.9 8.4	5.03 4.37	12.5	6.5	17.5	6.4
	1/2	15	22.2 21.8	12.5 11.0	5.97 5.18	9.5	9.5	22.5	7.9
	3/4	20	27.6 27.2	16.3 14.8	6.96 6.04	12.5	9.5	24.0	7.9
	1	25	34.3 33.9	21.5 19.9	7.92 6.93	12.5	12.5	28.5	11.2
	1 1/4	32	43.1 42.7	30.2 28.7	7.92 6.93	12.5	12.5	30.0	11.2
	1 1/2	40	49.2 48.8	34.7 33.2	8.92 7.80	12.5	12.5	32.0	12.7
	2	50	61.7 61.2	43.6 42.1	10.92 9.50	16.0	19.0	41.0	15.7

Note : (1) Upper and lower values for each size are the respective maximum and minimum dimensions.

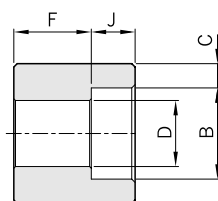
(2) Average of socket wall thickness around periphery shall be no less than listed values.
The minimum values are permitted in localized areas.

All dimensions are in millimeters.

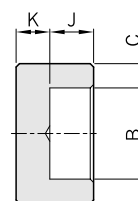
Full Coupling
SWFC



Half Coupling
SWHC



Cap
SWCA



ASME B16.11

Class Designation of Fittings	Nom. Pipe Size	DN	B Socket Bore Dia. ⁽¹⁾	D Bore Dia. ⁽¹⁾	Socket Wall Thk. C ⁽²⁾	Depth of socket Min. J	E	F	K Min.
9000	1/2	15	22.2 21.8	7.2 5.6	9.35 8.18	9.5	9.5	22.5	11.2
	3/4	20	27.6 27.2	11.8 10.3	9.78 8.56	12.5	9.5	24.0	12.7
	1	25	34.3 33.9	16.0 14.4	11.38 9.96	12.5	12.5	28.5	14.2
	1 1/4	32	43.1 42.7	23.5 22.0	12.14 10.62	12.5	12.5	30.0	14.2
	1 1/2	40	49.2 48.8	28.7 27.2	12.70 11.12	12.5	12.5	32.0	15.7
	2	50	61.7 61.2	38.9 37.4	13.84 12.12	16.0	19.0	41.0	19.0

Note : (1) Upper and lower values for each size are the respective maximum and minimum dimensions.

(2) Average of socket wall thickness around periphery shall be no less than listed values.
The minimum values are permitted in localized areas.