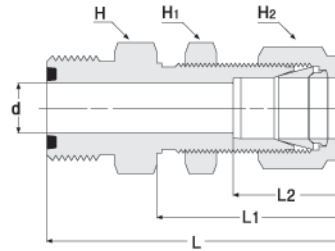


# Hy-Lok ZCO O-Ring Face Seal Fittings

## Hy-Lok Tube Fitting Bulkhead Connector

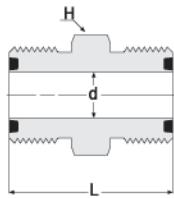
Adapts tubing to ZCO gland.



Part Number	ZCO Size in	T Tube O.D.	d	L	L <sub>1</sub>	L <sub>2</sub>	H Hex Flat	H <sub>1</sub> Hex Flat	H <sub>2</sub> Hex Flat	Panel Hole Size	Max. Panel Thickness	Working Pressure	
			in. (mm)									psig	bar
H-ZCOCBHC 4- 4	1/4	1/4"	0.18 ( 4.57)	2.10(53.34)	1.32(33.53)	0.60(15.24)	5/8"	5/8"	9/16"	29/64"	0.40"	10200	700
H-ZCOCBHC 6- 6	1/2	3/8"	0.28 ( 7.11)	2.34(59.44)	1.45(36.83)	0.66(16.76)	15/16"	3/4"	11/16"	37/64"	0.44"	6500	440
H-ZCOCBHC 8- 8	1/2	1/2"	0.40(10.16)	2.55(64.77)	1.65(41.91)	0.90(22.86)	15/16"	15/16"	7/8"	49/64"	0.50"	6700	460
H-ZCOCBHC12-12	3/4	3/4"	0.62(15.75)	2.86(72.50)	1.87(47.50)	0.96(24.38)	1-5/16"	1-3/16"	1-1/8"	1-1/64"	0.66"	5800	390
H-ZCOCBHC16-16	1	1"	0.87(22.10)	3.29(83.57)	2.26(57.40)	1.23(31.24)	1-5/8"	1-5/8"	1-1/2"	1-21/64"	0.75"	4700	320

## Union

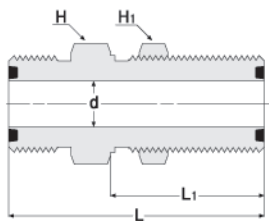
Connects ZCO glands.



Part Number	ZCO Size in	d	L	H Hex Flat	Working Pressure	
		in. (mm)			psig	bar
H-ZCOUA-4	1/4	0.18 ( 4.57)	1.25 (31.75)	5/8"	14300	980
H-ZCOUA-8	1/2	0.40 (10.16)	1.50 (38.10)	15/16"	11100	760

## Bulkhead Union

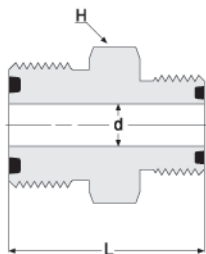
Connects ZCO glands.



Part Number	ZCO Size in	D	d	L	H Hex Flat	H <sub>1</sub> Hex Flat	Panel Hole Size	Max. Panel Thickness	Working Pressure	
		in. (mm)							psig	bar
H-ZCOBHU-4	1/4	1.06 (26.92)	0.18 (4.57)	1.88 (47.75)	3/4"	3/4"	37/64"	0.36"	14300	980
H-ZCOBHU-8	1/2	1.19 (30.23)	0.40 (10.16)	2.09 (53.09)	1-1/16"	1-1/16"	57/64"	0.40"	11100	760

## Reducing Union

Connects ZCO glands.



Part Number	ZCO Size in	ZCO Size in	d	L	H Hex Flat	Working Pressure	
			in. (mm)			psig	bar
H-ZCOUR8-4	1/2	1/4	0.18(4.57)	1.43(36.32)	15/16"	11100	760